

# Amaferm

Extracting the maximum nourishment from the diet is a prerequisite to achieving good feed efficiency and profitable milk production.

Whilst fibre is a major part of ruminant diets – typically more abundant than protein and starch even in intensive diets – it is poorly digested and utilised. More than 80% of dietary protein and 90% of starch are digestible compared with only 40 to 65% of fibre. Therefore better fibre digestion is a key area for improvement in ruminant diets. Improving fibre digestibility will allow higher dry matter intakes and therefore energy intakes, ultimately allowing higher milk yields.

#### **Amaferm**

Amaferm is a natural feed additive that boosts the digestibility of fibre. Amaferm works by providing rumen fungi – the most important rumen microbial group for fibre digestion – with the nutrients they need to accelerate fibre digestion.

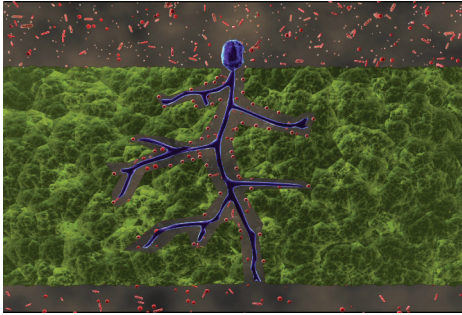
Amaferm also stimulates the growth of key beneficial rumen bacteria. Amaferm stimulates the fibrolytic bacteria that complete the job of fibre digestion. Lactate utilizing bacteria that help to reduce acidity in the rumen are also stimulated.

Improved fibre digestion contributes to better feed efficiency, improved feed intake and, in turn, higher milk yields.

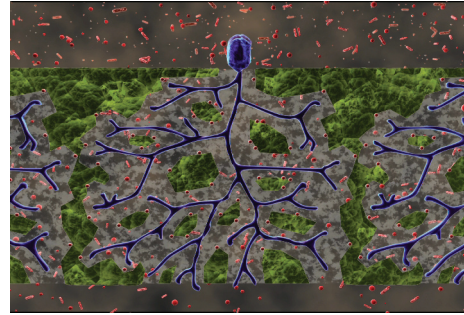
*“Amaferm - More milk from fibre”*



**Control: Growth of rumen fungi into fibre causes digestion**



**Amaferm: Stimulated rumen fungi growth means improved digestion**



**Advantages**

Amaferm improves fibre digestion, giving a beneficial effect on dry matter intake and milk yield. Results from 18 scientific studies, with cows in early, mid and late lactation, show an average increase in dry matter intake of 0.5kg and a milk yield increase of 4.8% (1.4L/cow) when Amaferm is used in the diet.

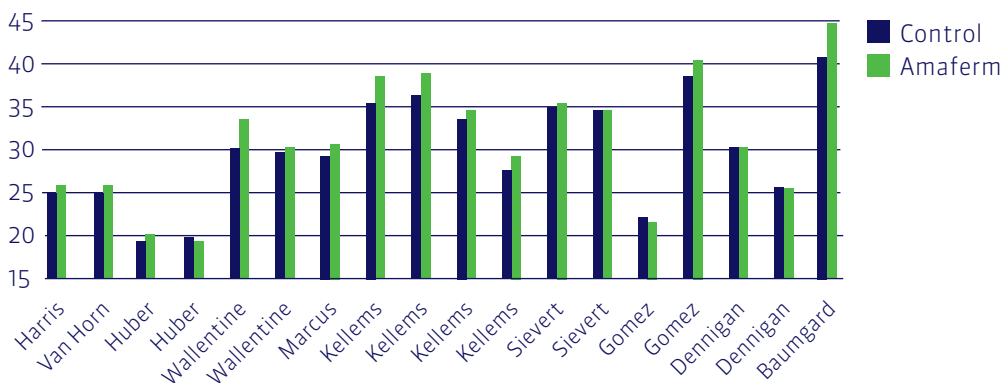
**Benefits**

Amaferm is effective in a wide range of diets. It is an ideal additive in high fibre silage diets and where the focus is on increasing milk from forage.

Amaferm has also been proven to work very well in intensive dairy diets by:

- Improving fibre digestion – fibre remains the largest portion of the diet even in intensive dairy diets
- Improving rumen pH – low rumen pH is often a problem in intensive dairy diets

**Milk yield with Amaferm versus control**



**Average 4.8% more milk!**

**Feeding instructions**

- Amaferm can be incorporated within mineral packs, compound feed or blends
- It is also available in a farm pack for TMR diets
- The target feeding rate of Amaferm farm pack is 100g/head/day

Provimi, Dalton Airfield Industrial Estate,  
 Thirsk, North Yorkshire, United Kingdom, YO7 3HE  
 T +44 (0) 1845 578125 F +44 (0) 1845 578100  
 E info@provimi.co.uk I www.provimi.co.uk

